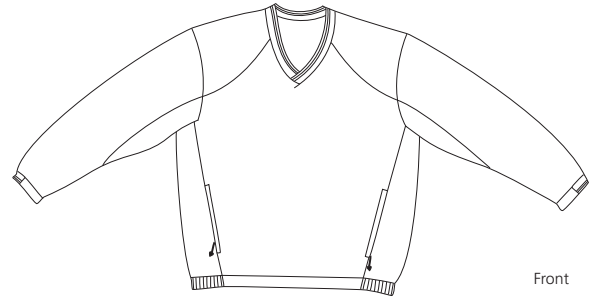
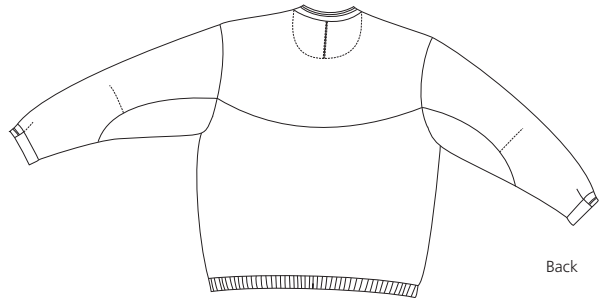


V-Neck Windshirt

NIKE GOLF 



Front



Back

234180

- 4.3-ounce • 100% polyester • Wind resistant • Water repellent
- Flat front and elastic back waistband • Set-in sleeve design
- Flat front waistband • Two front welt zip pockets
- Contrast Swoosh logo embroidered on left sleeve

Care Instructions:





Machine wash warm with like colors.
Do not bleach. Do not use softeners.
Tumble dry low. Cool iron.
Do not dry clean

Finished Measurements in Inches

| Size | XS | S | M | L | XL | 2XL | 3XL | 4XL |
|--------|----|------|----|------|----|------|-----|------|
| Chest | 21 | 22.5 | 24 | 25.5 | 37 | 28.5 | 30 | 31.5 |
| Length | 26 | 27 | 28 | 29 | 30 | 31 | 32 | 33 |
| Sleeve | 33 | 34 | 35 | 36 | 37 | 38 | 39 | 40 |

Chest width measured 1" below arm hole. Body length measured from back neck seam to hem. Shoulder width measured from arm hole seam to seam. Sleeve length measured from center back neck seam to hem.

Colors

| | |
|---|-------------|
|  | Birch |
|  | Black |
|  | Dark Navy |
|  | Olive Khaki |

Please Note:

Colors shown are approximate and for reference only. For closest match see PMS colors, or for exact match, returnable samples and grommeted samples are available.

Color Chart

| Colors | Birch | Black | Dark Navy | Olive Khaki |
|-------------|------------|------------|------------|-------------|
| Textile PMS | 13-0907 TC | 19-3903 TC | 19-3810 TC | 18-1112 TC |
| General PMS | 7534 C | ProBlk C | 276 C | 7531 C |