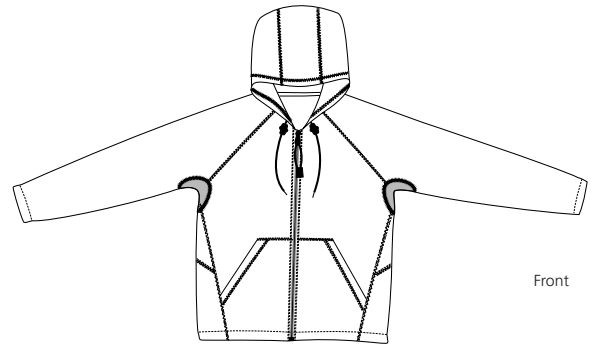
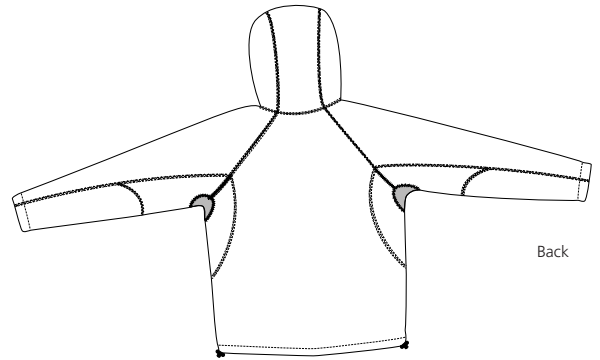


Microfleece Tonal Stitch Jacket



Front



Back

DT136

- * 100% poly microfleece * Expandable toggles at the hood and bottom sweep
- * Close fitting hood * Flatlock stitching

Care Instructions:

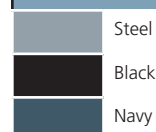
Machine wash warm. Wash inside out with like colors. Line dry. Do not bleach. Do not iron. Do not dry clean. Warning: Not flame retardant. Avoid contact with open flame.

Finished Measurements in Inches

Size	XS	S	M	L	XL	2XL	3XL	4XL
Chest	19	20	22	24	26	28	30	32
Body	26	27	28	29	30	31	33.5	34
Sleeve	32	33	34	25	36	37	38	39

Chest width measured 1" below armhole. Body length measured from high point shoulder to hem. Sleeve length measured from center back seam to hem.

Colors



Please Note:

Colors shown are approximate and for reference only. For closest match see PMS colors, or for exact match, returnable samples and grommited samples are available.

Color Chart

Body Colors	Steel	Black	Navy
Textile PMS	18-3916TC	19-4305 TC	19-3919 TC
General PMS	7544 C	Process Black	7546 C