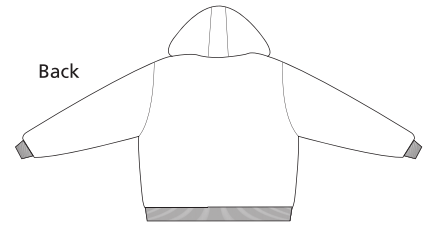
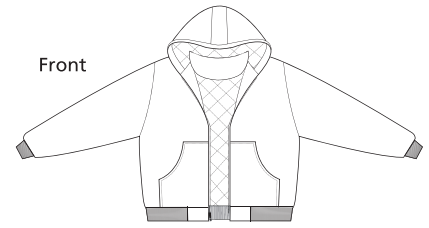


Hooded Work Jacket

CornerStone[™]
by Port Authority®



J763H

- * 12-ounce * 100% heavyweight cotton duck cloth * 6-ounce polyfill nylon lining
- * Hood with dyed-to-match drawstring * Rib knit cuffs and hem; muff pockets
- * Port Pocket™ for easy embroidery on left chest and back

Care Instructions:

Machine wash cold. Do not bleach.
Tumble dry low. Remove promptly.
Cool iron if necessary.
Do not dry clean if printed.

Finished Measurements in Inches


| Size | XS | S | M | L | XL | 2XL | 3XL | 4XL | 5XL | 6XL |
|----------------------|-----------------------|------|------|--------------|------|-----|---------------|------|------|------|
| Chest | 45 | 48 | 51 | 54 | 57 | 60 | 63 | 66 | 77.5 | 80.5 |
| Length | 26.5 | 27 | 27.5 | 28 | 29.5 | 30 | 31 | 31.5 | 33 | 34 |
| Sleeve | 33.5 | 35.5 | 37 | 38 | 38.5 | 39 | 39.5 | 40 | 42 | 42.5 |
| Areas for Decoration | Left Chest, Full Back | | | Port Pocket™ | | | Left Underarm | | | |

Collar measured center back seam to top hem. Chest width measured 1" below arm hole.
Body length measured from back neck seam to hem. Sleeve length measured from center back seam to hem.

Color Chart

| Color | Duck Brown |
|--------------|------------|
| Textile PMSf | 18-0933TC |
| General PMS | 464C |

Colors

 Duck Brown

Please Note:

Colors shown are approximate and for reference only. For closest match see PMS colors, or for exact match, returnable samples and grommets are available.