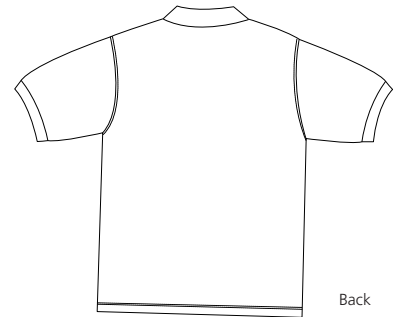
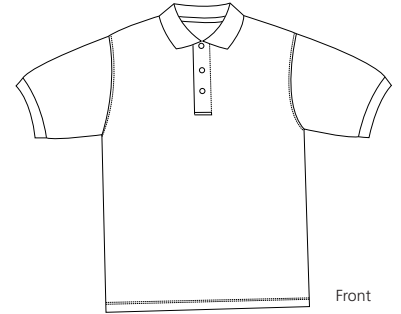


# 100% Organic Sport Shirt

PORT AUTHORITY®



## K496

- \* 5-ounce \* 100% organic cotton \* Flat knit collar
- \* 3-button placket \* Hemmed sleeves

### Care Instructions:

Machine wash cold with like colors.  
Do not bleach.  
Tumble dry low.  
Warm iron if necessary.

### Finished Measurements in Inches

| Size    | XS   | S    | M    | L    | XL   | 2XL  | 3XL  | 4XL  |
|---------|------|------|------|------|------|------|------|------|
| Chest   | 19   | 20.5 | 21.5 | 23.5 | 25.5 | 27   | 28.5 | 30   |
| Length  | 25.5 | 26.5 | 30   | 31   | 32   | 33   | 33.5 | 34   |
| Sleeve  | 9    | 9.5  | 11   | 11.5 | 12   | 12.5 | 13   | 13.5 |
| Collars | 15.5 | 16   | 16.5 | 17   | 17.5 | 18   | 18.5 | 19   |

Chest width measured 1" below arm hole. Body length measured from center back to hem.  
Sleeve length measured from shoulder seam to hem. Collar measured by circumference.

### Colors

|   |              |
|---|--------------|
|  | Black        |
|  | Blueberry    |
|  | Lemon        |
|  | Navy         |
|  | Spring Green |
|  | White        |

### Please Note:

Colors shown are approximate and for reference only. For closest match see PMS colors, or for exact match, returnable samples and grommeted samples are available.

### Color Chart

| Colors      | Black         | Blueberry | Lemon     | Navy      | Spring Green | White     |
|-------------|---------------|-----------|-----------|-----------|--------------|-----------|
| Textile PMS | 19-4006TC     | 17-3936TC | 12-0715TC | 17-1464TC | 14-0123TC    | 11-0601TC |
| General PMS | Process Black | No Match  | 7401C     | 533C      | 7494C        | No Match  |