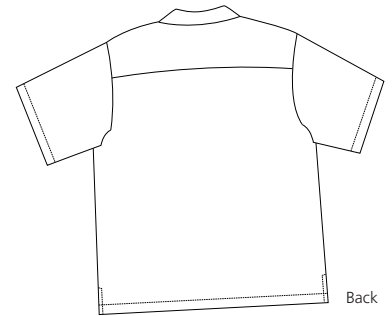
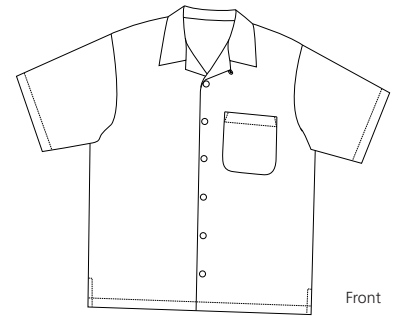




# RED HOUSE

THE WINE COUNTRY LIFESTYLE








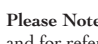
**Care Instructions:**  
 Dry clean only.  
 Cool iron reverse side as needed.

## 100% SILK HERRINGBONE CAMPSHIRT RH19

The fluid drape of silk with a distinguished herringbone weave.

- 100% silk
- Shell buttons
- Throat latch
- Straight bottom hem with side vents
- Black has smoked shell buttons

Finished Measurements in Inches								
Size	XS	S	M	L	XL	2XL	3XL	4XL
Chest	19.25	20.75	22.25	23.75	25.25	26.75	32.75	35.75
Body	24.5	26.5	28.5	30	31	32	35	35.5
Sleeve	8	9	10	10.5	11	11.5	13	13.5
Shoulder	17	18	19	20	21	22	25	26
Collar	15.5	16	16.58	17	17.5	18	19.5	20
Pocket	4.87x5.5	4.87x5.5	5.5x6	5.5x6	5.5x6	5.5x6	5.75x6.25	5.75x6.25

Colors	
	Black
	Bright Blue
	Citron
	Jade
	Papaya
	Winter White

**Please Note:** Colors shown are approximate and for reference only. For closest match see PMS colors, or for exact match, returnable samples and grommeted samples are available.

Chest measured 1" under arm hole. Body length measured from center back neck seam to hem.  
 Sleeve measured from shoulder seam to hem. Shoulder width measured from arm hole to arm hole.  
 Collar measured by circumference. Pocket measured WxH.

Color Chart						
Colors	Black	Bright Blue	Citron	Jade	Papaya	Winter White
Textile PMS	Process Black	659C	7403C	656C	170C	No Match
General PMS	19-1102TC	16-4032TC	12-0825TC	15-5812TC	15-1435TC	11-0104TC
Madeira Classic	1007	1143	1066	1047	1152	1003

### Red House Embroidery Recommendations *Provided by the Embroidery Trade Association*

RH19/RH20 – 100% Silk Herringbone Campshirt & Ladies 100% Silk Blouse

Backing: 1 oz cut-away with inner layer ripstop patterned nylon  
 Thread: 40 weight  
 Soluble topping not recommended.  
 Needle: Ball point

Notes: Fabric is strong but light. Embroiders nicely, but may not work as well with heavy, high-density designs. Designs over 12,000 stitches will become too heavy and wrinkle the fabric. Do not pack stitches too tightly or they will curl after cleaning. The fabric takes digitized small letters and narrow columns well.

*This information is intended to serve as a guideline for embroiderers. SanMar is not responsible for the compromised integrity of Red House fabrics due to embroidery or decoration.*